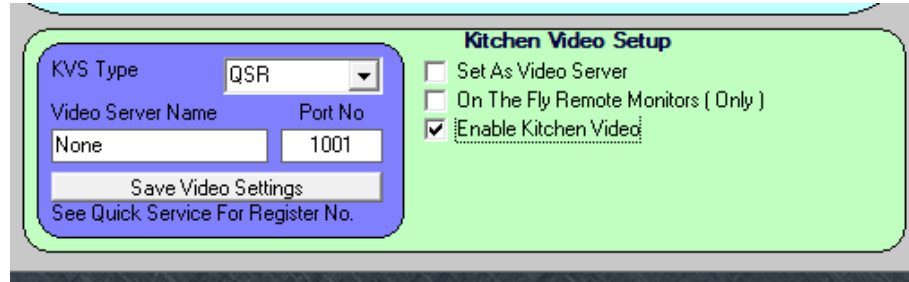


QSR Kitchen Video Setup

Configuring MicroSale to work with QSR

1. Go to



Managers Menu → Register Setup → Register Options by Terminal → Kiosk/Video Options.

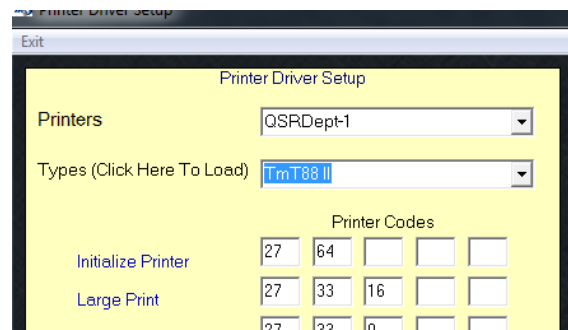
- a. In the *Kitchen Video Setup* section put a check mark in the box next to “Enable Kitchen Video”.
 - b. In the “KVS Type” drop-down menu select “QSR”, use defaults for video server name and port number.
 - c. Touch “Save Video Settings” and “Save” register options before exiting out to the Managers Menu.
2. Next, go to Managers Menu → Register Setup → Printers/Devices Setup → Remote Printer Setup.



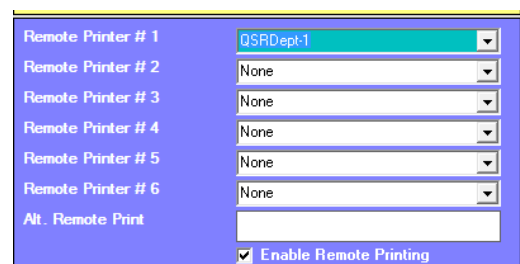
n

e drop-down menu for “Printer Name” select “QSRDept-1”, “QSRDept-2”, etc. for each KDS you will be using. Use the defaults of “None” for the “Available Printers” and “Device Name”.

- b. Touch “Save” after selecting each QSRDept-# you will be using.
3. Lastly, go to Managers Menu → Register Setup → Printers/Devices Setup → Printer Escape Codes.



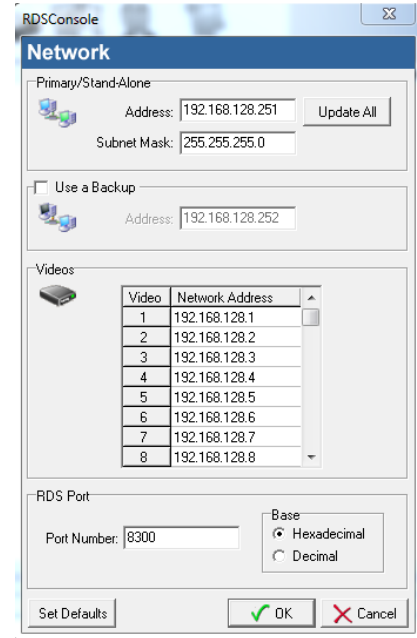
- a. Select each QSRDept-# from the drop-down menu at the top labeled “Printers”.
- b. Select the printer escape codes to use from the drop-down menu labeled “Types”.
- c. After the codes have populated select “Save to Printer”.



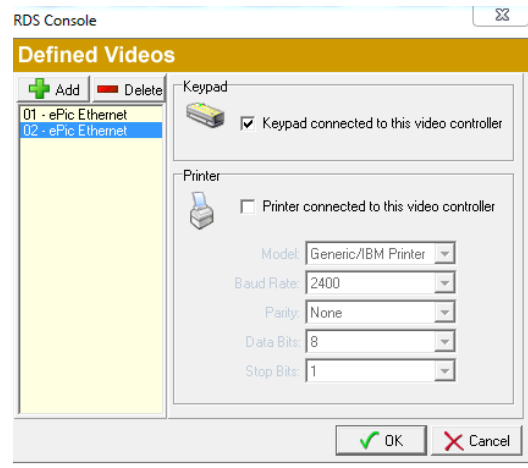
4. After the options are enabled and QSRDept-# is installed and loaded with escape codes it is now time to assign the menu items to the correct QSRDept. Please note that only one QSRDept should be assigned to each menu item in MicroSale. If multiple monitors are needed for each menu item then routing categories will be created through the QSR builder to set up. DO NOT assign more than one QSRDEPT to any menu item in MicroSale or double items will show on the kitchen monitors.

Installing and Configuring KDS Devices Using RDSConsole

1. On the KDS CD run “KDSSetup.exe” and “RDSSetup.exe” to install all necessary components.
2. Assign Ip Addresses
 - a. Go to Start→ Program Files or All Programs→ QSR Automations→ RDSConsole.
 - b. On the menu on the left side of the screen select “Network” to bring up the Ip assignment screen.
 - c. Enter the Ip address of the computer hosting the QSR software under the Primary/Stand Alone→ address field.
 - d. Touch the “Update All” button to assign Ip address to the Video IDs listed. (if you do not want the RDS to automatically assign Ip addresses to your QSR devices you can manually type each IP address instead of using the “Update All” function
 - e. Touch “Ok” to exit when finished to get back to the main console.

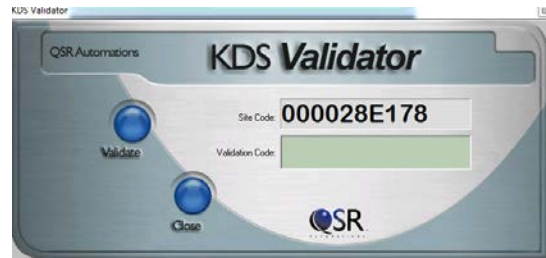


3. Defining Videos
 - a. On the left side of the screen click on the default device “01 – ePic Ethernet” to bring up the “Defined Videos” screen.
 - b. Click the “Add” button to add another device using the next Id available in sequential order. Click “Add” until all devices are defined.
 - c. You can also remove devices from here by using the “Delete” button.



4. Changing Device IDs. Each individual Epic controller requires a unique ID which is associated to the unique Ip address set in the previous section.
 - a. To change the Id of a device select the device from the “Videos Present” area and right-click on it.
 - b. Select “Set Id” and use the up/down to change to the desired ID.
5. Go to start→ Program Files→ QSR Automations→ KDS Validator.

- a. Provide QSR with the site code displayed and they will provide you with a validation code to enter into the validator.
 - b. Touch the “Validate” button to activate the software.
 - c. Touch “Close” to exit.
6. Create a shortcut to C:\QSRAuto\KDS\Bin\KDS.exe and place it in the start menu so that KDS will load when MicroSale does during boot up.
7. After all devices are assigned IDs, Ip addresses and are confirmed to be communicating the last step is to custom design each screen and create QSR routing. Please refer to the “QSR KDS Builder Pro User's Guide.pdf” for complete instructions on building KDS.

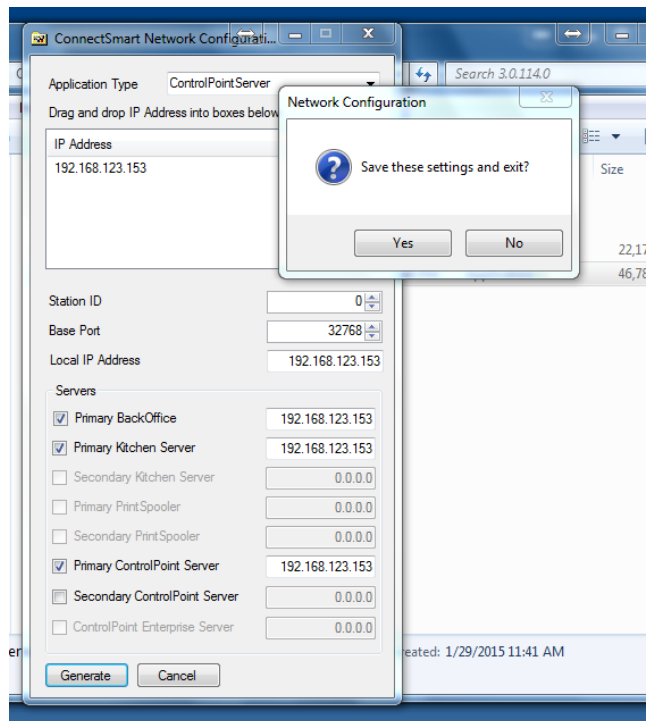


Notes: If you get the error message “Failed to Connect to Kitchen Video” when starting MicroSale then make sure that the two files: QSRVideo.dll and QSRSockB.dll are located in the MicroSale directory. They can be copied from the QSR folder on the FTP as well as the MicroSale CD.



Installing and Configuring CSK Devices

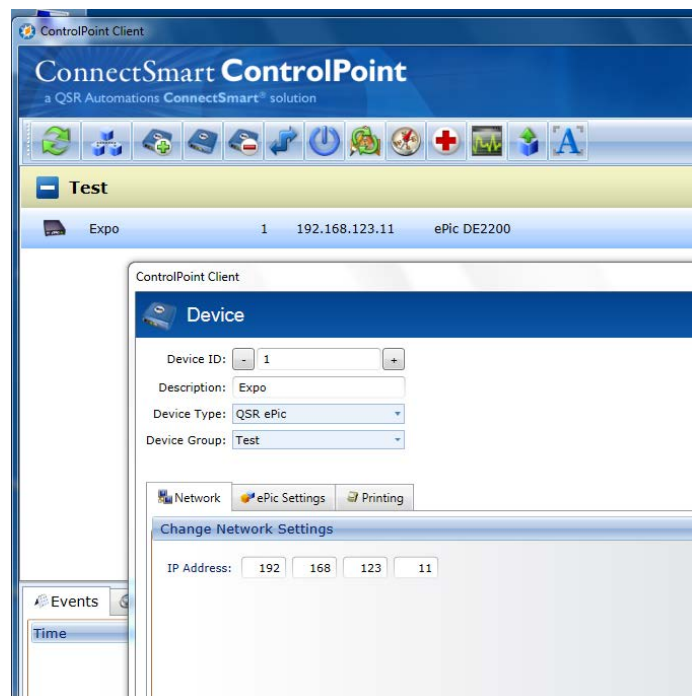
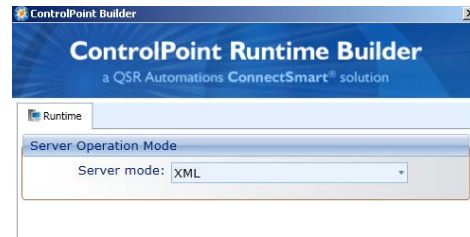
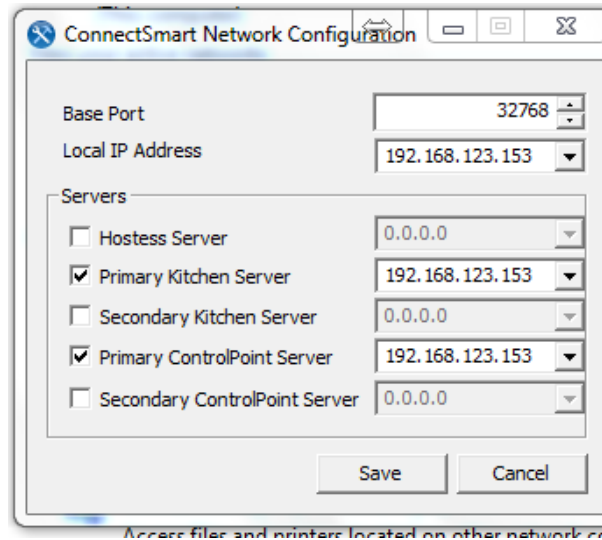
1. On the CSK CD run “KitchenServerSetup.exe” to install all necessary components. If prompted to install prerequisite components please follow onscreen instructions to do so.
2. Run “ControlPointServerSetup.exe”. If prompted to install prerequisite components please follow onscreen instructions to do so.

- a. During installation you will get to the “ConnectSmart Network Configuration” screen. The IP address of the current register should populate in the large field labeled “Ip Address”
- b. If this register is the Kitchen Video Server- Drag or copy the Ip address into the “Local IP address” field, the “Primary Kitchen Server” field, and the “Primary Control Point Server” field.
 - i. Click the “Generate” button to save configuration.



3. Run “ControlPointClienSetup.exe”. If prompted to install prerequisite components please follow onscreen instructions to do so.

- a. During the Installation you will get to the “Connectsmart Network Configuration” screen. The IP address of the current register should populate in the field labeled “Local Ip Address”.
 - b. Copy or type the ip address from the “Local Ip Address” field into the fields labeled “Primary Kitchen Server” and “Primary ControlPoint Server”.
 - c. Touch the “save” button to save settings and continue.
4. Set the Database type through Controlpoint Builder.
 - a. Go to Start→ Program Files→ QSR Automations→ ControlPoint Builder.
 - b. In the drop-down menu next to “Server Mode” select “XML”.
 - c. Click “OK” to Exit.
5. Start ControlPoint Server by going to Start→ Program Files→ QSR Automations→ ControlPoint Server.
6. Configure RDS Devices (Epic Controllers)
 - a. Start ControlPoint Client by going to Start→ Program Files→ QSR Automations→ ControlPoint. Note: ControlPoint (Client) will not start if the ControlPoint server is not already running.
 - b. Create a group to define your kitchen by going to the toolbar at the top and select this icon
 
 - i. Click the “Add” button.
 - ii. Type in group name.
 - iii. Save settings.
 - c. Create a device by clicking
 



- i. In the “device Id” field set the number for the device to use.
 - ii. In the “description” field type the name of the device. i.e. “Expo”
 - iii. Select the type of hardware being used in the “device type” field.
 - iv. Assign device to predefined group in the “device group” field.
 - v. On the Network Tab type in the Ip address you wish to assign to the device.
 - vi. If a bump printer will be connected to the controller then go to the printing tab and set printer parameters.
 - vii. Save settings.
7. Go to Start→ Program Files→QSR Automations→ QSR License Manager.
 - a. QSR will supply a license file for the specific site. Please download this file to the local computer.
 - b. Open up QSR License Manager and click on the “Import” button.
 - c. Browse to the file downloaded in step “7a” and click “Open”.
8. Create a shortcut to “C:\Program Files (x86)\Qsr Automations\ControlPoint\ControlPointServer\bin\ControlPointServer.exe” as well as “C:\Program Files (x86)\Qsr Automations\ConnectSmart\KitchenServer\Bin\KitchenServer.exe” and place it in the start menu so that KDS will load when MicroSale does during boot up.
9. After all devices are assigned IDs, Ip addresses and are confirmed to be communicating the last step is to custom design each screen and create QSR routing. Please refer to the “ConnectSmart Kitchen User's Guide.pdf” for complete instructions on building KDS.

Whether using KDX, KDS, or CSK it is important to have the program set to start with Windows to ensure that there is not any issue with communication.

- a. KDX- KDX.exe (C:\QSRAuto\KDX\Bin\KDX.exe)
- b. KDS- KDS.exe (C:\QSRAuto\KDS\Bin\KDS.exe)
- c. CSK- ControlPointServer.exe (C:\Program Files (x86)\Qsr Automations\ControlPoint\ControlPointServer\bin\ControlPointServer.exe);
As well As, (C:\Program Files (x86)\Qsr Automations\ConnectSmart\KitchenServer\Bin\KitchenServer.exe).

Configuring Datasets for KDS, KDX, or CSK

If using KDX, go to start→ Program Files→ QSR Automations→ KDX Builder to begin building your templates. Use the following guide provided by QSR Automations: “QSR KDX Builder User's Guide.pdf”.

If using KDS, go to Start→ Program Files→ QSR Automations→ KDS Builder Pro to begin building your templates. Use the following guide provided by QSR Automations: “QSR KDS Builder Pro User's Guide.pdf”.

If using CSK, go to Start→ Program Files→ QSR Automations→ ConnectSmart Kitchen Server→ Kitchen Builder Pro to begin building your templates. Use the following guide provided by QSR Automations: “ConnectSmart Kitchen User's Guide.pdf”.