

FDMS SETUP

Version 8.0.2061 and newer

- Select “FDMS” from the drop-down menu of the “Primary Host Name” field
- Type “FDMS” into the “Secondary Host Name” and “Merchant ID” fields
- The two sections - “Setup For CardNet” and “CardNet Setup” will appear with the “Https” and “VisalD” fields already populated

The screenshot displays the FDMS Setup interface, which is divided into several sections:

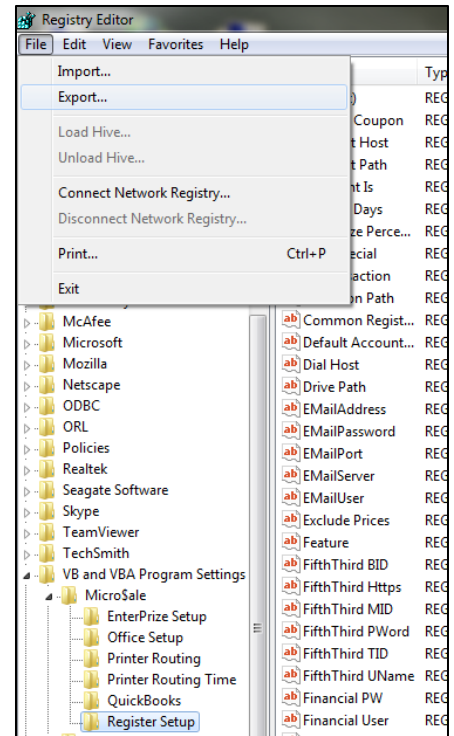
- Credit Card Setup (Dark Blue Background):**
 - Primary Host Name: FDMS (dropdown menu)
 - Secondary Host Name: FDMS
 - Merchant Id: FDMS
 - Terminal Id: 00000
 - Tokens On (Mercury / Data Cap Only)
 - Buttons: Dial Epay Setup, Mercury Setup
 - Setup For CardNet:
 - Https: https://support.datawire.net/nocportal/SRS.do
 - Terminal ID: [Empty]
 - Merchant Id: [Empty]
 - Bank Id: [Empty]
 - CardNet Setup:
 - URL 1: [Empty]
 - URL 2: [Empty]
 - URL 3: [Empty]
 - URL 4: [Empty]
 - DataWire: [Empty]
 - VisalD: 000000000000
 - Register CardNet button
 - Buttons: Remove Setup, Save Credit Card Setup
- Gift Epay Setup (Light Green Background):**
 - Gift Card Company Name: [Empty]
 - Primary Gift Host: [Empty]
 - Secondary Gift Host: [Empty]
 - Merchant Account Number: [Empty]
 - Port Number: 9100
 - Path to Database: (Click to set by default)
 - Buttons: Delete, Save
- Canadian Debit Card Setup (Light Green Background):**
 - Primary Debit Host Name: [Empty]
 - Secondary Debit Host Name: [Empty]
 - Merchant Id Number (Debit): [Empty]
 - Terminal Id (Debit): [Empty]
 - Debit Sequence No: [Empty]
 - Port: [Dropdown]
 - Pad Type: [Dropdown]
 - Buttons: Delete, Save, Key Change

- Fill in the “Terminal ID” and “Merchant Id” fields but leave “Bank ID” blank
- Select the “Save Credit Card Setup” button then exit MicroSale completely and restart the program
- Go back into the Credit Card Setup screen and select the “Register CardNet” button
 - It will auto-fill in URL 1-4 and the DataWire field (NOTE: This can take a few minutes depending on their connection speed). A message flashes stating: “Complete”
- Select the “Save Credit Card Setup” button then exit MicroSale completely and restart the program

To setup FDMS on the remaining terminals you will want to export the registry settings from this terminal and import them into the other terminals, see Page 2.

Setting up FDMS on additional terminals:

- In Windows: Go to Start → Run → Type in “regedit” → OK
- On the left-side of the screen select the following folders:
 - HKEY_CURRENT_USER → Software → VB and VBA Program Settings → Micro\$ale → Register Setup
- With “Register Setup” highlighted, go to File → Export...
 - Save the file to the Micro\$ale directory. Note: Typically we will name the file with the terminal’s name, example “POS1registry.reg”



- Browse to the Micro\$ale directory → right-click the file and select “Edit”, the file will open using NotePad
- Remove all lines that do not include FDMS information → SAVE
- Transfer this file to all other terminal’s Micro\$ale directories
- On each terminal, browse to the registry and double-click on it
 - A message will appear stating that this could change or delete your current registry information → Select Yes and then OK to the next message

